



SHIPPENSBURG PUMP CO. INC.
 P.O. BOX 279, SHIPPENSBURG, PA 17257
 PH 717-532-7321 • FAX 717-532-7704
 WWW.SHIPCOPUMPS.COM

Pride

Quality

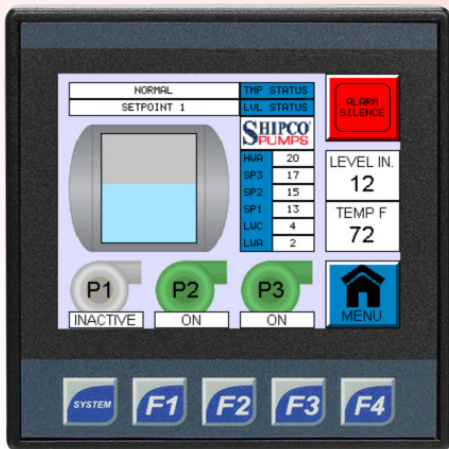
Craftsmanship

BULLETIN 183
 Revised 03/2019



TYPE SLC

SHIPCO® LOGIC CONTROLLER



OVERVIEW

SHIPCO® Type SLC (**SHIPCO®** Logic Controller) is an economical method of automating functions on a **SHIPCO®** condensate, boiler feed, deaerator or vacuum unit. Depending on the type of unit, the SLC can perform various functions such as pump control and alternation; display live level, temperature or pressure indication; and provide alarm status. All SLC controllers are UL® listed and feature a factory-programmed NEMA 4X full-color touchscreen HMI display. Control panels with an SLC include audible alarm and through-door disconnects. SLC controllers also have PID functions for all modulating controls.

Remote monitoring and control override through building automation protocols BACnet® and Modbus®.



SLC-C

Operates Condensate Return Unit and pumps water on high level.

- Live graphical and numeric indication for water level and temperature via **SHIPCO®** Transmitter.
- Operates up to 3 pumps with alternating or manual (lead-off-lag) control.
- Failure indication and protection with high and low water alarm, high temperature alarm and shutoff. Supports adding cooling water to maintain operating temperature.



SLC-V

Operates Vacuum only and maintains CFM.

- Live graphical and numeric indication for temperature and vacuum pressure via external float switch, vacuum transmitter and temperature transmitter.
- Operates 1-2 vacuum pumps with alternating or manual (lead-off-lag) control.
- Vacuum pumps turn on at low vacuum (high psia) and off at high vacuum (low psia). Optional VFD control on vacuum pumps.
- Failure indication and protection.
- Support for adding cooling water to maintain operating temperature.
- Makeup switch adds water to Vacuum Hurling Chamber.

SLC-VC

Operates Vacuum Condensate Return Unit, maintains CFM and pumps water on high level.

- Live graphical and numeric indication for water level, temperature, and vacuum pressure via SHIPCO® Transmitter, vacuum transmitter and temperature limit switch.
- Operates 1-2 vacuum pumps and 1-2 condensate pumps with alternating or manual (lead-off-lag) control.
- Condensate pumps turn on at high level and off at low level.
- Vacuum pumps turn on at low vacuum (high psia) and off at high vacuum (low psia). Optional VFD control on vacuum pumps.
- Failure indication and protection with high and low water alarm, high temperature alarm and shutoff to protect pumps from cavitation.
- Support for adding cooling water to maintain operating temperature.
- Make-up switch adds water to Vacuum Hurling Chamber.



SLC-FWS

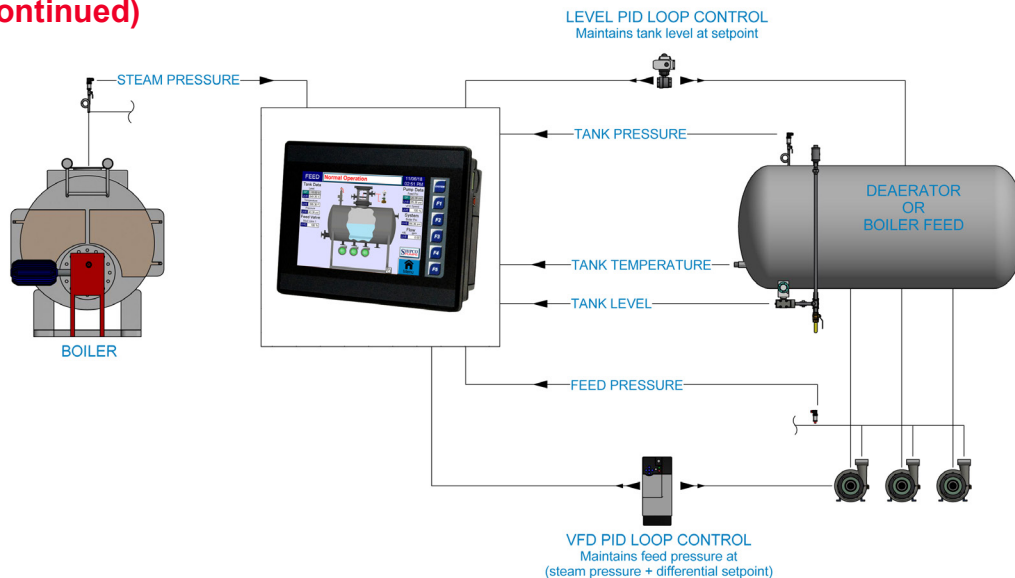
Operates a Feed Water System such as a Boiler Feed, Deaerator or combined DA/Surge (duo system). Configurations depend on end user requirements.

- Live graphical and numeric indication for water level and temperature via SHIPCO® Transmitter or differential pressure level transmitter and RTD temperature transmitter.
- Could operate up to 8 pumps with alternating and manual control; pump graphics to indicate status; operate from boiler level signals, maintain feed pressure or with VFDs.
- Support for modulating make-up valves and steam regulators.
- Failure indication and protection with various high & low water alarms; high & low temperature alarm. Shutoff for high temperature and low water. Alarms for routine maintenance and standby pumps and loss of sensor signal indicators.
- *VFD Max Efficiency Sequence* optimizes efficiency by maintaining multiple feed pumps at low speed.
- Support for additional modulating and solenoid make-up valves; transfer pumps; flow meters on makeup, transfer and feed water headers; modulating vent orifice valve.



On/Off Make-up Control	Modulating Make-up Control	Deaerator, Surge Tank or Duo System
<p>4" touchscreen control.</p> <p>SHIPCO® Transmitter with guided float level with built in temperature probe.</p> <p>Up to 2 solenoid make-up valves.</p> <p>High and low water level and temperature alarms.</p> <p>Low water cutoff and high temperature cutoff for pumps.</p> <p>No pump operation.</p>	<p>6" or 10" touchscreen control.</p> <p>Adds Modulating Make-up Valve Control or Guided Float.</p> <p>Differential pressure level transmitter or guided float level.</p> <p>RTD temperature transmitter.</p> <p>Alarms for level, temperature, pressure, etc.</p> <p>Up to 2 solenoid make-up valves.</p> <p>Up to 2 modulating make-up valves.</p> <p>No pump operation</p>	<p>6" or 10" touchscreen control.</p> <p>Adds Pump Control.</p> <p>Up to 8 boiler feed pumps and up to 4 transfer pumps.</p> <p>Up to 2 solenoid make-up valves (per tank)</p> <p>Up to 2 modulating make-up valves (per tank).</p> <p>Up to 2 steam regulators.</p> <p>Alarms for level, temperature, pressure, pump fault, routine maintenance, etc.</p> <p>Alternation and manual sequencing.</p> <p>On/Off operation from boiler level signals or to maintain feed pressure.</p> <p>Continuous for automatic standby.</p> <p>VFD Max Efficiency Sequence.</p> <p>Total and service interval run timers.</p>

SLC-FWS (continued)



Communications

Type SLC communicates to Building Automation Systems via BACnet® or Modbus® for Remote Monitoring and Control.

Complete monitoring for all sensory inputs and alarms with remote control override on all outputs.



BACnet® IP

User configurable connection parameters

IP Address, Subnet, Gateway

Factory can preset BACnet® Device ID

RJ45 10/100 Ethernet port

BACnet® MS/TP

Address, Baud, BACnet® Device ID, etc. preset by factory per requested specifications

Baud rates: 9600, 19200, 38400, 57600, 115200

RS-485 via RJ45 modular jack serial port



Modbus® TCP/UDP

User configurable connection parameters:

IP Address, Subnet, Gateway

RJ45 10/100 Ethernet port

Modbus® RTU

User configurable connection parameters

Address, Baud, Parity, Data/Stop bits, Handshake

Baud rates: 9600, 19200, 38400, 57600, 115200

RS-232 or RS-485 via RJ45 modular jack serial port